



Jogeshwari Construction

Engineering Excellence, Building the Future

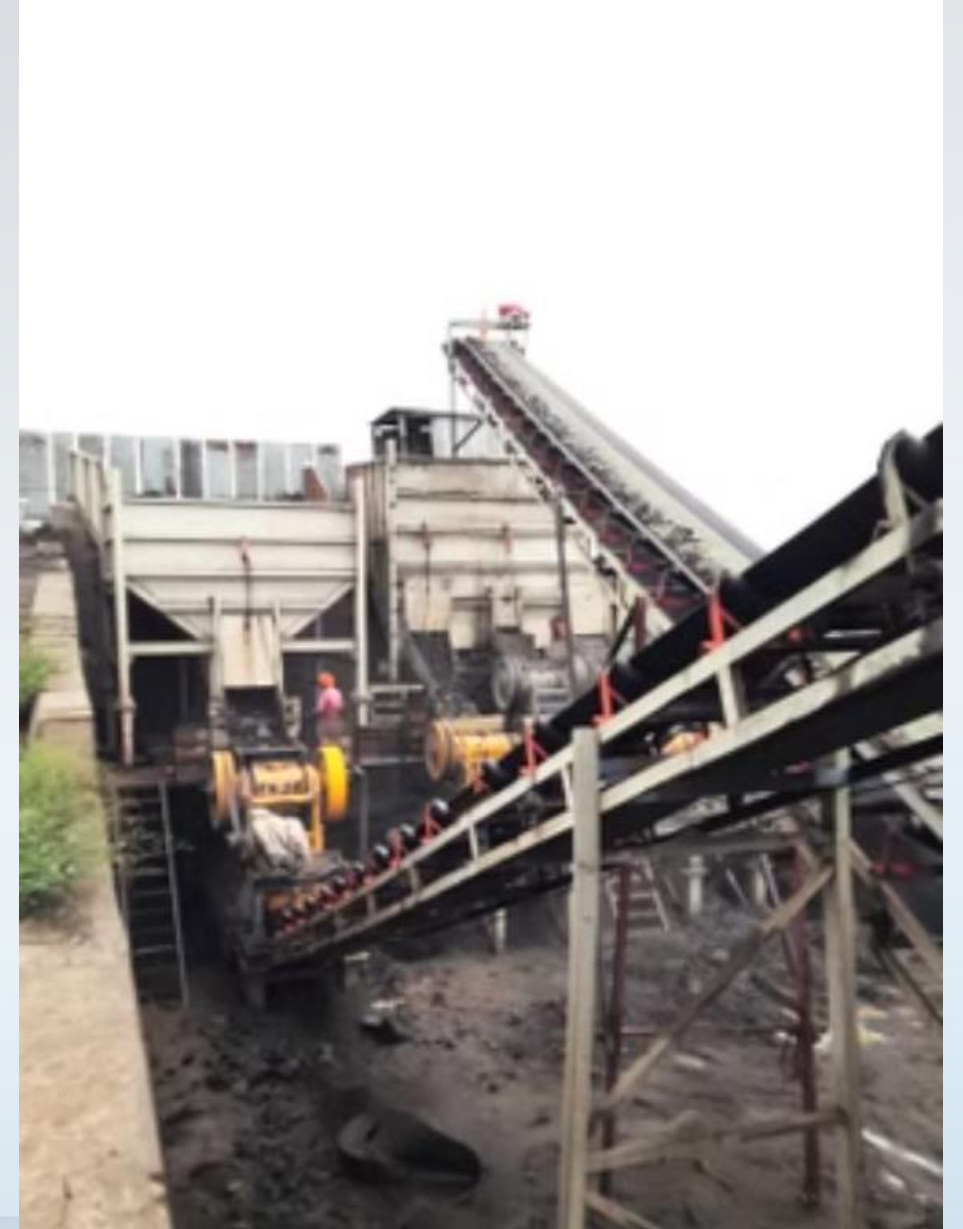
Jogeshwari Construction, established in 1998, has built a reputation for excellence in the construction industry. With over 25 years of experience, the company specializes in a diverse range of projects, from Bridge Construction Project, Building Construction Project to irrigation and industrial construction. also in Ready Driven by a commitment to sustainable, reliable, and resilient infrastructure solutions, Jogeshwari Construction is dedicated to driving national development and creating lasting impacts that enhance communities.



Our vision : is to be a leading construction company known for delivering excellence, excellence, innovation, and sustainability in every project and product.

Our mission : to be the most reliable stakeholder in every project we undertake, undertake, continually pushing the boundaries of the construction industry.

Diversified Expertise, Services:



Construction Services

Specializing in residential, commercial, and large-scale infrastructure projects, including bridge construction, building construction, retaining structures, concrete roads, and water supply projects.

Ready-Mix Concrete

Supplying premium quality concrete tailored to project specifications, with automated batching systems, a dedicated fleet of transit mixers, and environmentally friendly production processes.

Stone Crushing & Aggregate Supply Supply

Producing high-quality aggregates, including 10mm, 20mm, and 40mm aggregates, VSI crushed sand, GSB, and WMM, essential for construction and infrastructure development.

Delivering Excellence in Construction :

1 Bridge Construction

We specialize in the construction, and maintenance of bridges. Like Major Bridges, Minor bridges, VUP, ROB, RUB, Box/Slab Culvers, etc., , our team is experienced in managing all types of bridge projects.

2 Building Construction

Delivering both residential, commercial and Industrial projects that prioritize quality and timely execution, creating spaces that enhance communities.

3 Infrastructure Development

Specializing in the construction of concrete roads, retaining structures, and water supply projects, we contribute to the development of a robust and resilient national infrastructure.

Ready-Mix Concrete Solutions Reliable and Innovative

1

Automated Batching

Our ready-mix concrete plant is equipped with the latest technology, including automated batching systems, to deliver consistent and high-quality concrete for a wide range of applications.

2

Timely Delivery

Our dedicated fleet of transit mixers ensures the timely delivery of ready-mix concrete to our clients, enabling seamless project execution.

3

Customizable Mixes

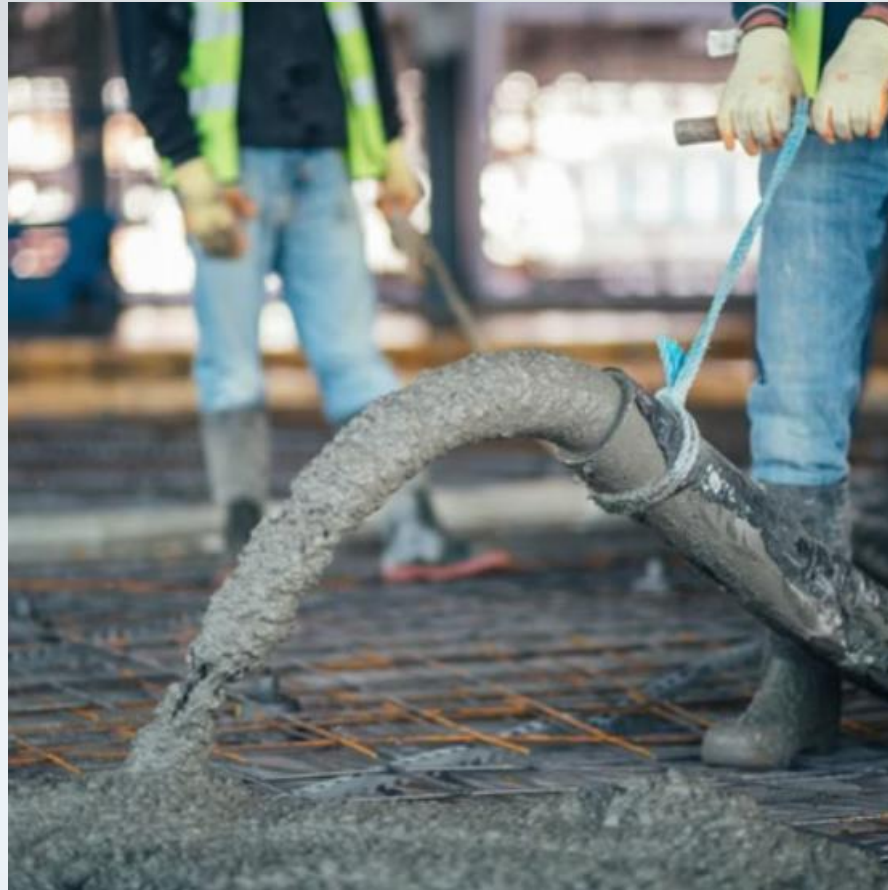
We cater to the specific needs of our clients, offering customizable concrete mixes for various construction applications, including residential, commercial, and infrastructure projects.

4

Quality Assurance

Our state-of-the-art facilities and rigorous quality control measures guarantee the production of high-quality materials that meet industry standards and specifications.

Photos of Our RMC Division:



Key Features of Our Concrete Lab:

1 Advanced Testing Equipment:

We have equipped our lab with state-of-the-art technology to test the compressive strength, workability, consistency, and durability of our concrete.

Equipment such as compressive strength machines, slump cone testing devices, and concrete mixers ensure the highest standards.

3 Quality Assurance:

Our quality control team ensures that each RMC batch adheres to IS 4926 standards for Ready Mix Concrete.

The testing procedures include checking raw materials (cement, aggregates, water, admixtures) to ensure they meet industry standards before being mixed.

2 Daily Testing Protocol:

Daily sampling and testing of the concrete mix are carried out to verify that every batch produced meets the required specifications.

Tests include checks for water-cement ratio, aggregate size distribution, and temperature control to maintain consistency.

4 Durability and Strength Testing:

We focus on creating concrete mixes that offer high durability and long-term performance, especially for large-scale infrastructure projects such as highways, bridges, and commercial complexes.

Cube testing for compressive strength is done at 7 and 28 days to guarantee the concrete's performance in the long run.



Trusted Supplier of High-Quality Aggregates



Crushed Stone Aggregates : Our state-of-the-art stone crushing facilities produce a wide range of high-quality aggregates, including Stone Dust, 6mm 10mm, 20mm, and 40/60mm sizes, as well as VSI crushed sand, GSB, and WMM, essential for construction and infrastructure projects.



Reliable Supply : We have established a reputation as a trusted supplier of construction aggregates, providing a reliable and consistent source of materials to a diverse range of clients, from cement manufacturers to infrastructure developers.

Key supply services include:

Transportation and Delivery :

We have a dedicated fleet of trucks to ensure that all orders are delivered on time, directly to construction sites or storage facilities.

Gradation Control:

We ensure that the aggregates are consistently sized to meet the specific requirements of concrete mixes, road bases, and other construction applications.

Accurate Weight Measurement:

Our fully calibrated weighbridge ensures that each truckload of aggregates is weighed with precision before delivery. This guarantees that the exact quantity of material ordered is provided to our clients.



Key Projects : Construction Service

1. Four Lanning of Kopargaon Ahmednagar Road SH-10 Km.78/200 To 120/000 & Construction of Two Lane Shirdi Rahata Bypass. 1) Construction Of Minor Bridge at Ch.16/350 On Shirdi Rahata Bypass
2. Four Lanning of Existing Two Lane Road from Pipalner to Dhule from Km.265 to Km.380 of NH 3 In the State of Maharashtra (ROB, Box Culvert, Dhule Service Road Drain Laling Underpass)
3. Civil Erection of The Indian Hume Pipe Co. Limited Factory Including Fabrication Shed, Moulding Shed, Winding Coating Shed, Trolley Lines, Sprinkler Yard, Pipe Yard, Internal Roads, and Barbed Wire Fencing
4. Constructing MH-2089 (Block Malegaon) Bridge on Valwade - Chatanpada Taluka Border Road Tal. Malegaon, Dist. Nashik. (PMGSY, MRRDA, Nashik.)
5. NSK-58 P.W.D. Dhule A) Improvement to Mehergaon Dhule Amalner Road SH-15 Km.0/00 to 45/190 (Mehergaon to Navalnagar) B) SH-15 Km.45/190 to 64/790 C) NH-6 to Ajang Ambobe Nawalnagar to NH-6 Km.0 to 106/35
6. Up Gradation of Kusumba to Malegaon Section of Principally Approved of NH from Ch.55+000 Km to Ch.96+410 Km Structure Work of MJB, MNB, Box Culvert, Retaining Structure, Total Length 41.345 Km).
7. Up-Gradation of Shevli (Junction of With Nh-6 Near Sakri) Nizampur, Chhadvel, Nandurbar, Taloda, Akklakura Section of Nh-753-B In the State of Maharashtra, Structure Work of MJB, MNB, Box Culvert, Retaining Structure.
8. Gaumukh Dam Repair and Maintenance at Kalkhede Dist. Dhule. Irrigation Department Dhule, Sub-Division
9. Project Sewage Scheme for Dhule City Under Amrut Abhiyan at Dhule District, Dhule. Work: Sub-Work Number – 6 Sewage Pumping Station PS-2 Civil Work and Sub-Work Number – 4 Sewage Pumping Station PS-1 Civil Work
10. Structure Work For: Design and Construction of 6-Lane VUP at Purmepada (Km 282.322) on Dhule - Pimpalgaon (Km 265 To Km 380) Section of NH-3 (New NH-60)

GLIMPSES OF PROJECTS



Ready Mix Concrete Key Projects:

- 1** Ready Mix Concrete Supply for J M Mhatre Mhatre Infra Limited (Fagne to Dhule Section Section NH-6 Project)
- 2** Ready Mix Concrete Supply for Avenue Supermarts Limited (D-Mart-Dhule & Malegaon)
- 3** Ready Mix Concrete Supply for Mahavir Real Real Space Pvt. Ltd. (MRIDC ROB at Amalner Amalner)
- 4** Ready Mix Concrete Supply for Jindal Power Limited at Jindal Power Plant Nardana MIDC, Dhule.
- 5** Ready Mix Concrete Supply for Shirpur Construction Pvt. Ltd. (SVKM NMIMS Dhule Campus)
- 6** Ready Mix Concrete Supply for Chavara Public School, Dhule and Chalisgaon.
- 7** Ready Mix Concrete Supply for Maharashtra Oil Extraction Limited, Avdhan MIDC, Dhule.
- 8** RMC Supply for Sunniva Constructions Pvt. Ltd. (Solar Industries India, Nagpur) at Dhule Project

Photos Of Our RMC Division:



Crushed Stone Aggregate Major Supply :

- VSI Sand Supply for The Indian Hume Pipe Co. Ltd.
- VSI Sand Supply for Gannon Dunkerley & Co., Ltd:
- Aggregate & Sand Supply for Wipro Enterprises Pvt. Ltd
- Aggregate Supply for Ultratech Cement Limited, Dhule RMC
- Aggregate & Sand Supply for Bharat Wire Rope Limited
- Aggregate Supply for Indian Oil Corporation Limited, Shirur Depot

Our Technical Team

Sr. No.	Name	Qualification	Designation	Experience (in Years)
1	Shelar Kishor Eknath	H.S.C.	Director	30 Years
2	Shelar Deepak Eknath	B. Com	Director	30 Years
3	Shelar Pramod Eknath	H.S.C.	Director	23 Years
4	Shelar Dhananjay K.	B. E. Civil	Project Co-Ordinator	6 Years
5	Salunkhe Abhijeet	B. E. Civil	Senior Site In-charge	8 Years
6	Hazare Kunal	B. E. Civil	Site Engineer	5 Years
7	Pawra Sukhlal	B.Tech. Civil	Site Engineer	5 Years
8	Patil Bhatu	Graduate	Mechanical Incharge	8 Years
9	Mistary Vishal	Graduate	RMC Manager	5 Years
10	Premdas Patil	H.S.C	Site Supervisor	12 Years
11	Karve Anil	H.S.C.	Site Supervisor	7 Years
12	Patil Rajendra	H.S.C.	Site Supervisor	30 Years
13	Agrawal Shubham	B. Com	Senior Accountant	10 Years
14	Patil Ajay L.	B. Com	Accountant	7 Years
15	Rehan Shaikh	B. Com	Accountant	3 Years

DETAILS OF PLANT & MACHINERY



Concrete Batching Plant
Plant



Excavators:
For digging and heavy lifting.



Backhoe Loaders:
Essential for earthmoving and grading.
grading.



DUMP TRUCKS:
Used for transporting materials.
materials.



Transit Mixers
10 tyre / 6.00 Cum Capacity



Concrete Pumps
SP-1400 - 02 Pumps In fleet



Compactor Roller.



Rock Breakers

Equipment's, Tools and Machinery Details:

SR.NO	DESCRIPTION	MAKE	NOS.	CAPACITY
1	CONCRETE BATCHING PLANT (CP-30)	STRONG MACHINES	01	CP-30
2	CONCRETE PUMP (SP-1400)	SCHWING STETTER	02	SP-1400
3	TRANSIT MIXER (7 CUM)	TATA	05	07 CUM
4	TRANSIT MIXER (7 CUM)	MAHINDRA	02	07 CUM
5	6 TYRE TRUCK SE 1613	TATA	01	11.30 CUM
6	6 TYRE TRUCK SE 1613	TATA	01	11.30 CUM
7	6 TYRE TRUCK 1214C	BHARAT BENZ	01	7.00 CUM
8	10 TYRE TRUCK LKP 2518	TATA	01	17.00 CUM
9	10 TYRE TRUCK 4825	ASHOK LAYLAND	03	17.00 CUM
10	BOLERO CAMPER GOLD	MAHINDRA	01	4+1 UTILITY
11	BOLERAO PICK-UP JEEP	MAHINDRA	01	2.4 CUM
12	EXCAVATOR (Pocklane) 323	CAT 323D3	01	CAT 323D3
13	EXCAVATOR (Pocklane) 200	VOLVO EC200D	01	EC200D
14	EXCAVATOR (Pocklane) 110	TATA HITACHI EX110	01	EX 110
15	ROCK BREAKERS (Pocklane) FINE	FINE EQUIPMENTS	02	CAT 323D3/FINE

CONTINUED..

Equipment's, Tools and Machinery Details:

SR.NO	DESCRIPTION	MAKE	NOS.	CAPACITY
16	ROLLER COMPACTOR	VOLVO	01	SD 110
17	BACKHOE LOADER	TEREX TLB 844 S	02	90HP
18	BACKHOE LOADER	MANITDU MLB745S	01	74.5HP
19	FINE FI ROCK BREAKER	FINE EQUIPMENTS	01	FINE 5
20	TRACTOR WITH TRAILAR	MAHINDRA	05	4.1 CUM
21	TRACTOR WITH TRAILAR	SWARAJ	01	4.1 CUM
22	CONCRET MIXER	ESQUIER HAND FEED 200	02	10/ 7 CFT 200 lit
23	CONCRET MIXER	ESQUIER MACHANICAL TYPE 200	02	10/ 7 CFT 200 lit
24	CONCRET MIXER	UNIVERSAL HYDROLIC 200	01	10/ 7 CFT 200 lit
25	REVERSE DRUM CONCRET MIXER	ESQUIER REVERSE DRUM 800	01	0.5 CUM
26	WEIGH BATCHER	UNIVERSAL	02	10/ 7 CFT 200 lit
27	DEWATERING SET	DISEL Engine KIRLOSKAR	03	5 HP
28	DEWATERING SET	GREAVES MK 25	01	3 HP
29	WATER PUMP	ELECTRIC TEXMO	02	1 HP
30	WATER PUMP	MOTAR SAGUNA	02	½ H

CONTINUED..

Equipment's, Tools and Machinery Details:

SR.NO	DESCRIPTION	MAKE	NOS.	CAPACITY
31	VIBRETOR WITH NEEDLE 60MM	GREAVES DIESEL	02	5HP
32	VIBRETOR WITH NEEDLE 40MM	GREAVES KEROSIN /PETROL	03	MK 25
33	VIBRETOR WITH NEEDLE 40MM	GREAVES ELECTRIC	02	3 HP
34	VIBRETOR WITH NEEDLE 25MM	GREAVES ELECTRIC	03	3HP
35	ELECTRIC GENRETOR SET	KIRLOSKAR	02	125 KV
36	ELECTRIC GENRETOR SET	KIRLOSKAR	06	10KV/7.5KV
37	ELECTRIC GENRETOR SET	KIRLOSKAR	02	30 KV
38	ELECTRIC BENDING MACHINE	-	02	05 HP
39	ELECTRIC CUTTING MACHINE	-	02	05 HP
40	CUBE MOULD 15X15X15	CAST IRON	60	-
41	CONCRET WHEEL BARROW	M.S	15	90SQ.M
42	STORE ROOM	M.S.&G.I.SHEETS	16	2.5HP
43	ELECTRIC WELDING MACHINE	RAJDEEP 2 PHASE	02	1.5 HP
44	ELECTRIC WELDING MACHINE	MALIK 1 PHASE	02	1 PHASE
45	GRINDER	TABLE TYPE	02	1 PHASE
46	GRINDER	HAND TYPE HITACHI	02	1 PHASE
47	HAND BREAKER	DEWALT	04	-
48	DRILL	TABLE STAND	02	-
49	GAS CUTTER SET	-	01	-
50	WOOD CUTER	HITACHI	04	1 PHASE
51	HAND STEEL BAR CUTTER	DIVALT 14	04	-

List of Shuttering Material:

SR. NO.	MATERIAL DESCRIPTION	SIZE	NOS.
1	M.S.P.C.E. Props	2*2 mtr	700
2	M.S.P.C.E. Props	3*3 mtr	100
3	M.S. Adjustable Beam Span	2*2 mtr	200
4	M.S. Sheet & Angle Frame Plates	90* 60 mtr	2000
5	M.S. Sheet & Angle Frame Plates	1.2*0.6 mtr	700
6	M.S. Sheet & Solder Angle	1.2*0.6 mtr	100
7	M.S. Solder Crash Barrier	1.0*0.813 mtr	60
8	M.S. Solder Hunch & Camphor	1.2*0.225&1.2*0.37	160
9	M.S. Solder	3.0*0.10 mtrr	170
10	M.S. Solder	3.0*0.15 mtrr	10
11	M.S. Solder	3.0*0.20 mtrr	10
12	M.S. Shikanja	0.6*1.2 mtr	100
13	M.S.Pipe	6 mt 45 dia	50
14	M.S. Pier Round Farma	1.2*0.75	08
15	M.S. Pier Round Farma	1.2*0.90	08
16	M.S. Pier Round Farma	1.2*1.00 mtr	08

List of Shuttering Material:

SR. NO.	MATERIAL DESCRIPTION	SIZE	NOS.
17	M.S. Pier Round Farma	1.2*1.2 mtr	08
18	Girder shuttering	18 mt.*1.5mtr	01
19	M.S. Cuplock (Vertical Member)	3.00*0.050	400
20	M.S. Cuplock (Vertical Member)	2.00*0.050	400
21	M.S. Cuplock (Vertical Member)	1.50*0.051	400
22	M.S. Cuplock (Vertical Member)	1.00*0.051	400
23	M.S. Cuplock (Distribution Member)	1.20*0.050	1600
24	M.S. Cuplock (Distribution Member)	1.80*0.050	400
25	M.S. Cuplock (Distribution Member)	0.85*0.050	400
26	"C" Channel M.S.	0.10*0.05*6 mtr	50
27	"I" Section Girder M.S.	0.15*0.075*6 mtr	75
28	"I" Section Girder M.S.	0.10*0.050*6 mtr	150
29	"C" Channel M.S. Slab Bracket	0.10*0.05*6 mtr	75
30	M.S. Angal Bracket	1.20*0.60	80
31	Water Proof Ply Wooden Shuttering	2.4*1.2 mtr	80
32	MS U Jack	0.035*0.45mtr	400
33	MS Plain Jack	0.035*0.45mtr	400

Recognized for Excellence and Commitment



Industry Accolades :

- 1) Vice Secretary of the Builder Association of India, Dhule Centre
- 2) Member of the CREDAI - Confederation of Real Estate Development Association of India
- 3) Member of Contractor Association, Dhule Centre
- 4) Member of ACCEI - Association of Consulting Civil Engineers (India)
- 5) Member of Rotary International Club

Leadership Team:



Mr. Kishor E. Shelar



Mr. Deepak E. Shelar



Mr. Pramod E. Shelar



Er. Dhananjay K. Shelar

Our Sister Firms:





Contact Us:

We welcome you to connect with us and explore how Jogeshwari Construction can be your trusted partner in driving national development through sustainable, reliable, and resilient infrastructure solutions.

Office Address

28, Laxmi Nagar, Abhay Collage Road, Behind Market Yard,
Dhule

Email

jogeshwariconst@gmail.com

Phone

(02562) 231 500

Mobile

9422287050, 9823625500, 9168661225

Thank You

We look forward to future collaborations and contributing to successful projects.